



KICKING OFF OUR THIRD DECADE OF ENVIRONMENTAL IMPACT

Annual Report

Fiscal Year 2024
July 1, 2023 – June 30, 2024

Letter from our CEO

“The stars dance in the sky, waiting for the world under it to fall into sleep. They whisper in the darkness, soothing us to rest, protecting us from the dark sky.”

– 5th grade School Overnight Program student

During our School Overnight Program, a student wrote this poem that truly captivated me. As I read it, it invited me to pause. I immersed myself in the words and emotions the student expressed, hearing a deep sense of wonder and appreciation for the magic of the natural world.

It is in moments like this that I know we are fulfilling our mission.

No matter which of our programs children participate in, on Bainbridge Island or off, they encounter learning experiences specifically crafted to ignite a sense of wonder, inspire new ideas, and foster a deeper understanding and love for the natural world. IslandWood is dedicated to creating immersive experiences that enhance this connection with nature—because we cannot truly care for what we do not feel connected to.

When children participate in our programs, they aren't just learning about the natural world through stories or readings; they are immersing themselves with all their senses. Our educators thoughtfully design visceral experiences to ensure that every moment is impactful. You may have encountered similar deeply experiential moments in your own life—those instances that become unforgettable. It is these memorable experiences that have the power to shape the course of our lives.

While directly reaching youth through our programs is central to our mission, we recognize that we can't reach every child in the state of Washington. However, we firmly believe that every child deserves access to hands-on, experiential environmental learning.



This conviction drives our collaboration with educators. Our Graduate Program in partnership with the University of Washington and our Teacher Professional Learning courses for classroom teachers play a vital role in expanding the number of educators who can inspire wonder, discovery, and exploration through nature-based learning.

I feel immense hope because I know that students across Washington are deepening their connection to the planet through their experiences with IslandWood programs and IslandWood-trained educators. As we embark on our third decade, I want to thank you for believing in the power of nature-based learning to change the world. I know that our efforts are having an immeasurable impact and that the future health of our communities and the planet depends on the environmental stewards, advocates, leaders, and educators we are inspiring now.

With gratitude and appreciation for this amazing community,

Megan Karch
CEO
ceo@islandwood.org

Our Board of Directors

BOARD CHAIR

Ellie Fields

IMMEDIATE PAST CHAIR

Jason Baumgarten

VICE PRESIDENT AT LARGE

David Goldberg

VICE PRESIDENT AT LARGE

Marguerite Kondracke

TREASURER

Fred Kleisner

SECRETARY

Sara Moorehead

BOARD MEMBERS

Bisi Akinola

Skyler Brown

Laury Bryant

Laura Clise

Camille Gibson

Leslie Gordon

Audrey Haberman

Lois Hartman

Chasity Malatesta

Dan Meyer

Ben Nimmergut

James Oppenheimer

Sara Otepka

Ben Packard

Nat Pieper

Stacey Sturgess

Pooja Tandon

Kelvin Washington Jr

David Wu

PRESIDENT & CEO

Megan Karch

BOARD EMERITUS

Fraser Black

Paul Brainerd

Kim Cleworth

Ty Cramer

Martha Kongsgaard

Dennis Madsen

Beth Morgan

Katherine James Schuitemaker

Alan Smith

Jon Snare

Dwight Sutton

Edward Thomas

John Warner

Patricia Wasley

Howard Wollner

FOUNDERS

Debbi and Paul Brainerd



Throughout the Region

Teacher Professional Learning: Our courses are designed to help teachers take science learning outside, model equitable science instruction, and increase student climate literacy. This year we did a considerable amount of work guiding teachers in how to localize national science units, which helps make learning more relevant and engaging to students. This type of support was in high demand this year, and we worked with teachers from 50 different school districts! The idea of localizing national curriculum is catching on around the country, and we're excited to continue expanding this work in the coming year, reaching an even larger audience and potentially impacting how local climate education is incorporated into classrooms far beyond Washington State. Learn more about our teacher offerings at islandwood.org/tpl.

Watch a video about the incredible 'No Idling' project students organized after their teachers participated in an IslandWood course at islandwood.org/no-idling



Justice, Equity, Diversity & Inclusion: We envision a world where every child, especially those from under-resourced schools, experiences nature-based learning designed expressly to support their needs, celebrate their identities, and instill a strong sense of belonging. When all children experience nature-based learning in this way, we will be inspiring the action and care for our communities and the planet that we'll need for generations to come. To achieve this vision, we will continue to build on the work we've been doing to center justice, equity, diversity, and inclusion into every aspect of our organization. This includes our programs for youth and educators, the public and private events we host, the culture we create with our staff, and our administrative practices and policies. We'll continue to share our progress with you as we work toward our vision.

Advocacy: We believe all children in Washington State should have access to meaningful outdoor learning, and since our founding we've advocated at the state level to make that happen. This year, alongside our peers in the Washington Outdoor School Coalition, we worked to increase state funding for schools to attend environmental programs like ours. As a result, in the 2024-2025 school year, 98,070 students across the state will experience outdoor learning – a 36% increase over last school year!



On Bainbridge Island



School Overnight Program: We welcomed 3,372 students from 76 different schools to explore our campus, building connections to their science curriculum and to each other. As part of the program, we were thrilled to bring back our Artist in Residence program, which had taken a pause at the start of the pandemic. Throughout the school year, six artists shared their talents, leading sessions in drawing, journaling, collage, paper cutting, poetry, fiber arts, and sculpture. We believe integrating art is a powerful way for students to learn, make sense of, integrate, and experience the natural world around them. Know an artist that might be a wonderful addition to the program? Check out islandwood.org/artist.

Graduate Program: Our program, in partnership with the University of Washington, included 15 graduate students that taught our School Overnight Program as their practicum, while also focusing deeply on their justice-oriented coursework. This fall, we launched a new course called Art, Science & Climate Justice Education. The course guides graduate students in exploring science and art as tools that can help us see the world in new ways.



Community Education Programs: It was yet another record-breaking year for Community Education, serving over 7,700 people with programs on our campus. In the 2024/2025 school year, we are hosting all your favorites, including many Afternoon on the Trails days, HOWL-o-ween, Mushroom Mania, Amorous Amphibians, and a Celebration of Mothers. And, keep your eyes out for some new events you're sure to love, like Trivia Nights, Spring Equinox Star Party, and Busy Bees! You can always see what's happening at islandwood.org/events.



Dine & Discover: We had so much fun with our quarterly dinner series this past year! The evenings included time on our trails, live music, an appetizer reception, and delicious meals crafted and paired with the perfect wines by Chef Jim and his team. Upcoming dinners will be held on December 7, 2024; March 15, 2025; and June 12, 2025. Get tickets at islandwood.org/dinediscover!



Dinner in the Woods: Records were also broken at Dinner in the Woods, our annual fundraising event, with a remarkable \$1,294,000 in donor support! This incredible generosity means more children will experience IslandWood programs and more educators will receive support in making their science teaching equitable, engaging, and relevant for their students! Of course, we are already planning ahead for our next Dinner in the Woods — save May 3, 2025 on your calendars!

Summer Camp: We had 785 campers join us for summer fun with camps ranging from Bugs, Grubs, and Slugs, to Earth Art, Soil to Snack, and so many more. This year we introduced walking field trips to Rockaway Beach and Fort Ward, which were such a hit, we're planning more field trip adventures for summer 2025!



Day Programs at the Brightwater and South Treatment Plants: In partnership with King County Wastewater Treatment Division, we lead programming for students at both plants designed to broaden the idea of “environment” to include urban systems and emphasize human impacts on ecosystems. We brought classroom learning to life, engaging 5,511 students in experiential and project-based fieldwork.

Duwamish River Program: In this program, 219 children sailed down the Duwamish River to learn how the river has been impacted by people over decades and how local communities and groups have made improvements to the ecosystem. The program aims to show students that they have the power to be changemakers in their community!



Creekosystem Field Study: Over 400 fifth-graders joined us for this field trip, designed to enhance the Ecosystems Restoration science unit taught in Seattle Public Schools. Students investigate water quality, soil, plants, and human impacts at either Meadowbrook or Be'er Sheva Parks and then propose action steps to improve the health of the ecosystem.

Salmon in the Schools: In this program, classes received salmon eggs and tended to them in their classroom for several months, learning about the salmon lifecycle and their importance to our local ecosystems. Then, in the spring, 1,750 students released their salmon into a local creek, sending them off and wishing them well! Watch a video about Salmon in the Schools at islandwood.org/salmon.



Summer Camp: There was lots of exploration, discovery, and summer fun at the Brightwater Education Center in Woodinville! Over 100 children participated in camps such as Super Critters, Ecosystem Investigators, Brightwater Birders, and more!

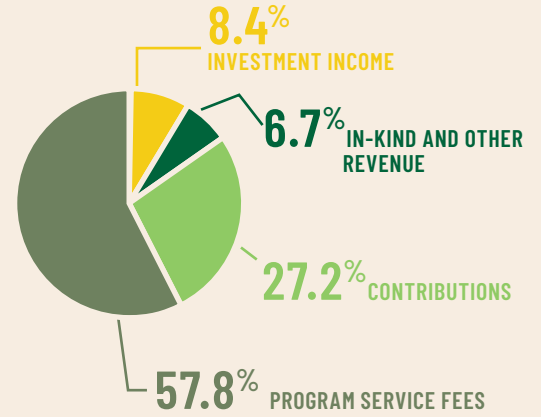
Summary of Fiscal Year 2024

STATEMENT OF FINANCIAL POSITION

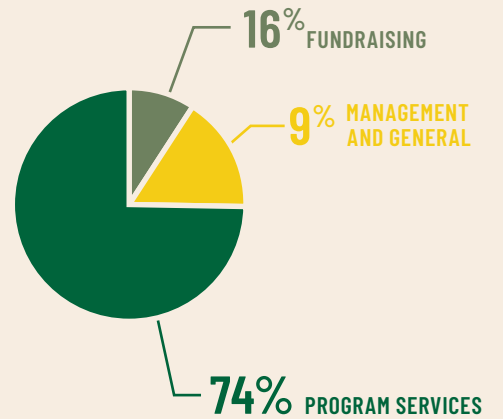
Fiscal Year Ending June 30

ASSETS	2024	2023
Cash	264,272	1,102,950
Accounts Receivable	421,815	458,401
Pledges Receivable	906,965	1,315,634
Investments	19,874,159	18,780,447
Inventory and Prepaid Expenses	334,201	307,790
Property and Equipment (net)	26,476,388	27,384,183
Total Assets	48,277,800	49,349,405
LIABILITIES AND NET ASSETS		
Liabilities		
Accounts Payable	133,345	324,434
Accrued Expenses	446,595	366,700
Deferred Revenue	1,523,914	1,508,075
Total Liabilities	2,103,854	2,199,209
Net Assets	46,173,946	47,150,196
Total Liabilities and Net Assets	48,277,800	49,349,405

SUPPORT AND REVENUE (FY 2024)



EXPENSES (FY 2024)



Our programs throughout the region impacted **34,366 people** this year — breaking last year's record high, thanks to your support!

Brightwater Education Center Programs: **4,165 children**
Summer Camps: **118 children**
Community Programs: **209 people**

WOODINVILLE

Salmon in the Schools: **1,750 children**
Creekosystem Field Study: **407 children**
Duwamish River Program: **219 children**

SEATTLE

BAINBRIDGE ISLAND

Community Programs: **7,700 people**
School Overnight Program: **3,372 children**
Summer Camp: **785 children**
Voices from the Field: **90 children**
Graduate Program: **15 students**

RENTON

South Plant Programs: **1,346 children**

Teacher Professional Learning Programs:
281 teachers reaching 13,909 students

ONLINE

Advocacy efforts: **Thousands of children and educators** throughout the state of WA

OLYMPIA



Upcoming Events

Here are some upcoming community events you should save the date for!

- Mushroom Mania Hikes **November 10**
- Digging into Nature Lecture **November 17**
- #OptOutside Afternoon on the Trails **November 29**
- Dine & Discover Community Dinner **December 7**
- MLK Day of Service Work Party **January 20**
- Winter Skills of a Naturalist Series **January**
- Dine & Discover Community Dinner **March 15**
- Amorous Amphibians **March 29**
- Spring Skills of a Naturalist Series **April**
- Dinner in the Woods **May 3**
- Mother's Day Brunch **May 11**

Friends of IslandWood

Last year we launched the Friends of IslandWood program to show our deep appreciation for our incredibly supportive donor community.

When you give a gift of \$150 a year, either as a one-time gift or as monthly gifts, you are a Friend of IslandWood.

Your support ensures meaningful environmental learning experiences for kids, support for educators, and programming for community members AND provides you with the added benefit of additional access to our Bainbridge Island trails most weekends!

Learn more and give today at islandwood.org/friends



MISSION

To provide exceptional learning experiences and inspire lifelong environmental and community stewardship.



4450 BLAKELY AVE NE
BAINBRIDGE ISLAND, WA 98110
206.855.4300
[ISLANDWOOD.ORG](https://islandwood.org)

FOLLOW US    