



<https://extension.wsu.edu/kitsap/water-stewardship/beach-naturalists/>

Brought to you by:



WSU KITSAP EXTENSION
Water Stewardship



WSU Extension programs and employment are available to all without discrimination. Evidence of noncompliance may be reported through your local WSU Extension office. Reasonable accommodations will be made for persons with disabilities and special needs who contact Anna McClelland at anna.mcclelland@wsu.edu at least two weeks prior to the event.



Explore Your Local Beaches

2024 Free Beach Exploration Schedule

Join local naturalists out on Kitsap beaches to observe the unique creatures that call the fragile intertidal zone home. These 90 minute low tide beach explorations are FREE and suitable for all ages. Boots or closed-toe shoes recommended. No registration required unless specified.



2024 WSU Kitsap Beach Naturalist Exploration Schedule



Shine Tidelands State Park

Northwest side of Hood Canal Bridge

- May 8 - 10:30am - 12:00pm
- June 9 - 12:30pm - 2:00pm
- July 7 - 11:30am - 1:00pm
- August 2 - 9:00am - 10:30am



Kitsap Memorial State Park

202 NE Park St, Poulsbo

- June 7 - 11:00am - 12:30pm
- August 3 - 10:00am - 11:30am

Key:



Discovery Pass Required



Hosted by Kitsap Regional Library
Check KRL website for specifics

Silverdale Waterfront Park

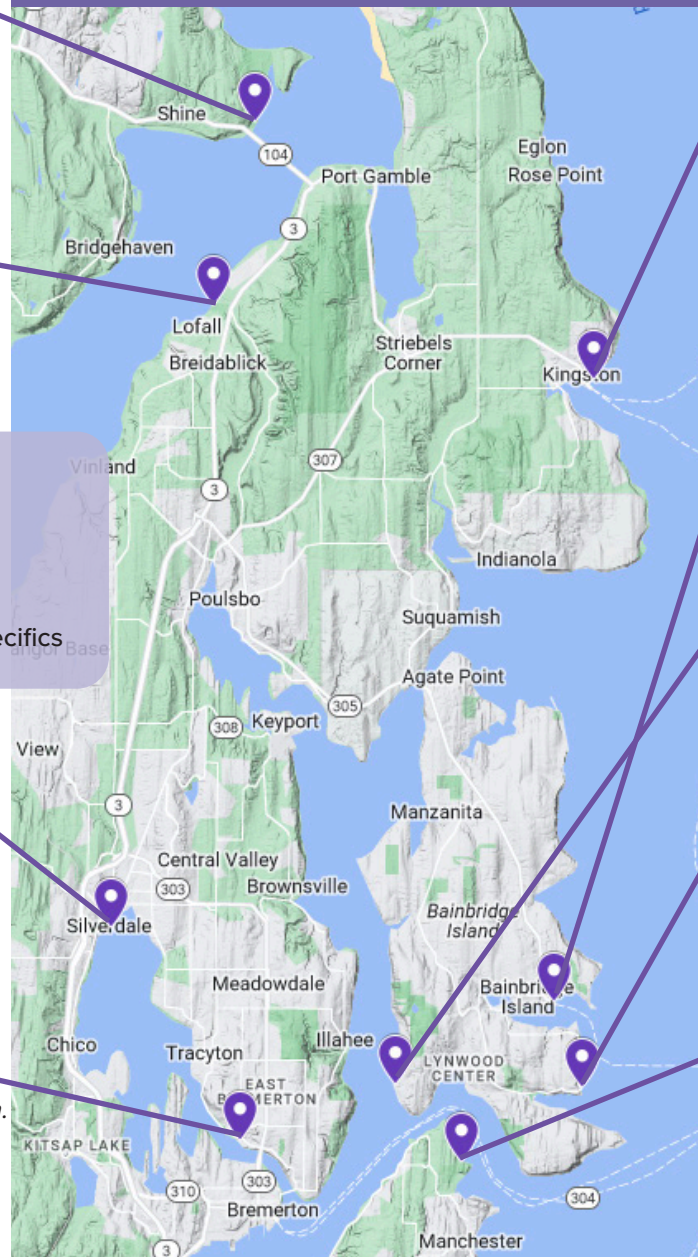
3337 NW Byron St, Silverdale - Meet at the tables near the restrooms or find us on the beach.

- June 21 - 11:30am - 1:00pm
- July 20 - 10:00am - 12:00pm
(Discovery Play Days, registration required)

Lion's Park - Bremerton

251 Lebo Boulevard, Bremerton - Meet at northwest end of Lion's Park, near the boat launch.

- June 6 - 11:00am - 12:30pm
- July 22 - 11:30am - 1:00pm
- August 6 - 12:00pm - 1:30pm
(Books, Beach, and Barnacles event)
- August 20 - 11:30am - 1:00pm



Kingston Saltair Beach Park

25055 Washington Blvd. NE Kingston - North of ferry dock - Some 2-hr free parking is available in the lower lot next to the marina and in the public park landward of the ferry loading lot.

- May 27 - 1:00pm - 2:30pm
- June 23 - 1:30pm - 3:00pm
- July 20 - 10:00am - 11:30am (KRL Event)
- August 19 - 10:00am - 11:30am

Bainbridge Ferry Terminal

Access the beach by parking in downtown Winslow, walking through Waterfront Park to Waterfront Trail, which passes a condo complex.

- June 22 - 10:45am - 12:15pm

Point White Pier - Bainbridge Is.

3939 Crystal Springs Dr NE, B.I. - Meet at Point White Pier or find us on the beach.

- July 22 - 11:30am - 12:45pm

Rockaway Beach - Bainbridge Is.

4002 Rockaway Dr. NE - This small conservancy park is easy to miss with a limited parking area. Carpooling encouraged. There is a short flight of stairs to beach.

- August 19 - 10:15am - 11:30am



Manchester State Park

7767 E. Hilldale Rd., Port Orchard - Meet on lawn near the old torpedo warehouse.

- June 24 - 12:30pm - 2:00pm
- July 19 - 9:30am - 11:00am
(Books, Beach, and Barnacles event)
- August 19 - 10:30am - 12:00pm



Kitsap Beach Naturalists

For people interested in protecting our shorelines through education and stewardship.